



Malaysia

Brunei

LARUAN FEDERAL TERRITORY

SABAH

Sandakan

Tawau

Bintulu

Tarakan

Sibu

SARAWAK

Serian

Kalimantan

EAST KALIMANTAN

Bontang

Samarinda

Balikpapan

Pontianak

Sintang

WEST KALIMANTAN

CENTRAL KALIMANTAN

Palangkaraya

SOUTH KALIMANTAN

Palu

CENTRAL SULAWESI

Sulawesi

WEST SULAWESI

Palopo

SOUTH SULAWESI

SOUTH EAST SULAWESI

Parepare

Indonesia

Malaysia

Kuala Lumpur

MALACCA

Singapore

Perak

SELANG

JAMBI

Jambi

Palembang

BANGKA BELITUNG ISLANDS

Pulau Belitung

BENGKULU

SOUTH SUMATRA

KIAU ISLANDS

Celebes Sea

Makassar Strait

Batu Belais

- Deepest (11-2m)
- Clear water
- High abundance of *Mosspacea* sp.
- Very little bleaching
- Many sponges and sea fans



Anemone's Garden

- Depth 9-10 m
- Many Anemones, as name indicates
- Massive and plate corals
- High abundance of filter feeders
- Not much bleaching observed



Eve's Garden

- Nearest to the Bazaru River catchment
- Shallow (4-7m)
- Many soft corals, large part is bleached
- Large *Cladia* (>1 m height)
- High algae cover



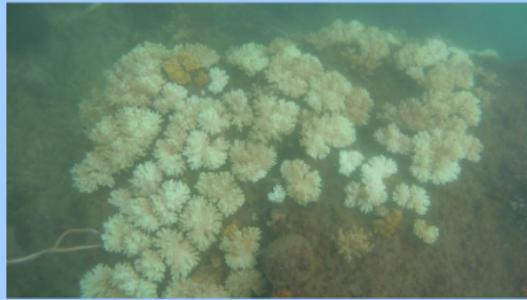
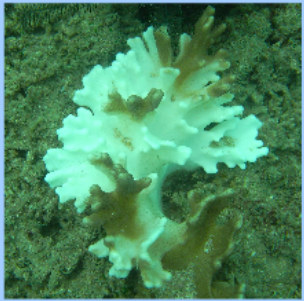
Siwa Reef

- Depth 9-18 m
- Remote from Bazaru River (10 km)
- Very high biodiversity
- Massive, branching and plate corals
- Bleached *Blattis* and *Acropora* sp.



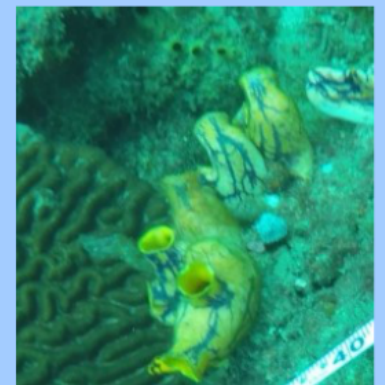
Eve's Garden

- Nearest to the Baram River catchment
- Shallow (4-7m)
- Many soft corals, large part is bleached
- Large Porites (>3 m length)
- High algae cover



Anemone's Garden

- Depth 9-12 m
- Many Anemones, as name indicates
- Massive and plate corals
- High abundance of filter feeders
- Not much bleaching observed



Siwa Reef

- Depth 9-18 m
- Remote from Baram River (10 km)
- Very high biodiversity
- Massive, branching and plate corals
- Bleached *Porites* and *Pachyseris* sp.



Batu Belais

- Deepest (11-20m)
- Clear water
- High abundance of Montipora sp.
- Very little bleaching
- Many sponges and sea-fans

